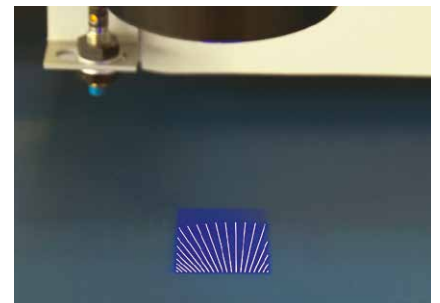
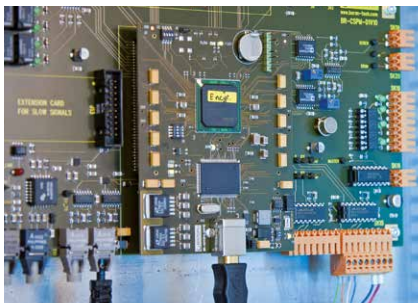
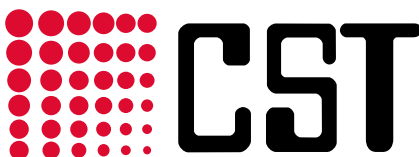


CST DLE-ROTARY ENGRAVER

Established in the market – valued by a wide range of customers



The CST rotary engraver is our proven solution for high-quality, efficient and profitable screen exposure processing of seamless rotary screen production. This is the most efficient method to produce the highest quality rotary screens for textile printing in the market today.



www.c-s-t.de

CST GmbH · Königsberger Straße 117 · 47809 Krefeld · Germany
Tel +49 2151 159 226 0 · Fax +49 2151 520 329 · email office@c-s-t.de

CST GmbH (R&D) · Kriegerstraße 26a · 82110 Germering · Germany
Tel +49 89 844 873 · Fax +49 89 845 942 · email office@c-s-t.de

CST DLE-ROTARY ENGRAVER

Established in the market – valued by a wide range of customers

DIGITAL LIGHT IMAGING

Directly imaging and exposing coated screens eliminates screen masking by wax, ink or film. Consumables are no longer needed. A Digital Mirror Device (DMD) modulates an ultra-high power UV light source with image data using up to 2,000,000 micro mirrors. While the DMD moves over the screen in sequence, the data scrolls continuously and results in perfectly seamless image production. As each of the mirrors represents one pixel, high speeds are possible and the imaging quality is exceptionally high. Resolutions of up to 2,500 dpi are possible.

DMD is the best light modulator for this application presently available on the market. Texas Instrument, the world leader in micro-mechanical mirror modulators, provides the DMD for the DLE screen imaging system. With millions systems in operation since 1996, the DMD is a state of the art technology that's proven in resilience and dependability.

SEAMLESS ENGRAVING

A big problem with film based screen-making is retouching the screen. The DLE engraver works absolutely seamless for any resolution.

DLE COMPARED TO OTHER SCREEN IMAGING METHODS

This process totally eliminates ink, wax, film, darkroom and the associated chemical and film processing, masking, retouching and taping of films.

The benefits are obvious: The screen is produced easier, faster, cheaper, at higher quality levels and with less production steps.

TECHNICAL SPECIFICATIONS

maximum screen length up to screen circumference	3.5 meter 640, 820, 914, 1018 larger circumferences on request
power requirements	230 V single phase, 2,5 kVA
machine speed exposure system	2 m screen in 10 minutes DMD-System with UV bulb or LED light source
resolution consumables needed	up to 2500 dpi none

- Autofocus system to compensate various distances between mesh and headsystem
- Automatic calibration system

SCREEN HOLDER SYSTEM

The screen is held by 2 conical adapters on each side. The screen length is adjusted by the right side adapter. Under software control, the screen is pressurized with a constant air flow. With this method, a perfectly round screen shape is achieved ensuring highest engraving quality. The DLE head distance is automatically adjusted to different screen circumference by an autofocus system.

LED TECHNOLOGY

The new generation of DLE machines contains modern UV light sources. These LED light sources are integrated. This improves the stability and the lifetime of the fully encapsulated light source drastically.

OUR COMPANY

CST GmbH has established an excellent reputation in the fields of colour scanners, film plotters and screen imaging systems, reflected by large market share and worldwide sales to more than 50 countries with more than 850 installations. Using the latest in mechanical and electrical technology, our engineering team develops the reliable and accurate lines of machines optimized for ease of operation, high productivity and quality. Since 2002 our company is ISO 9001:2000 certificated.

THE CST PRODUCT RANGE AT A GLANCE

- DLE, DLE ROTARY, DLE-COMPACT, DLE-ECO
- Rotary and flatscreen waxjet / InkJet engravers
- Special solutions for engraving and scanning



www.c-s-t.de

CST GmbH · Königsberger Straße 117 · 47809 Krefeld · Germany
Tel +49 2151 159 226 0 · Fax +49 2151 520 329 · email office@c-s-t.de

CST GmbH (R&D) · Kriegerstraße 26a · 82110 Germering · Germany
Tel +49 89 844 873 · Fax +49 89 845 942 · email office@c-s-t.de