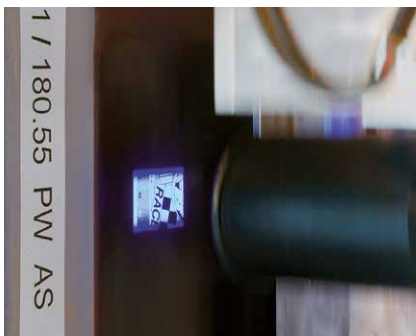
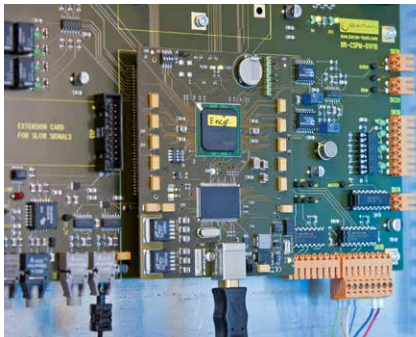
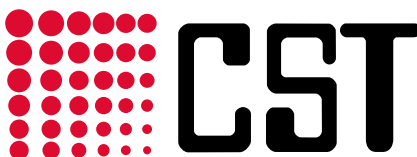


CST DIGITAL LIGHT ENGRAVER

Established in the market – valued by a wide range of customers



CST proudly introduces the DLE screen imaging system, our latest development in screen imaging technology. Utilizing a digitally controlled mirror device manufactured by Texas Instrument, the DLE screen imaging system images and exposes the screen directly from computer-to-screen. The new and efficient scrolling and digital light processing technology sets new standards in screen imaging and is patented.



www.c-s-t.de

CST GmbH · Königsberger Straße 117 · 47809 Krefeld · Germany
Tel +49 2151 159 226 0 · Fax +49 2151 520 329 · email office@c-s-t.de

CST GmbH (R&D) · Kriegerstraße 26a · 82110 Germering · Germany
Tel +49 89 844 873 · Fax +49 89 845 942 · email office@c-s-t.de

CST DIGITAL LIGHT ENGRAVER

Established in the market – valued by a wide range of customers

DIGITAL LIGHT IMAGING

Directly imaging and exposing coated screens eliminates screen masking by wax, ink or film. Consumables are no longer needed. A Digital Mirror Device (DMD) modulates an ultra-high power UV light source with image data using up to 2,000,000 micro mirrors. While the DMD moves over the screen in sequence, the data scrolls continuously and results in perfectly seamless image production. As each of the mirrors represents one pixel, high speeds are possible and the imaging quality is exceptionally high. Resolutions of up to 2,500 dpi are possible.

DMD is the best light modulator for this application presently available on the market. Texas Instrument, the world leader in micro-mechanical mirror modulators, provides the DMD for the DLE screen imaging system. With millions systems in operation since 1996, the DMD is a state of the art technology that's proven in resilience and dependability.

DLE COMPARED TO OTHER SCREEN IMAGING METHODS

This process totally eliminates ink, wax, film, darkroom and the associated chemical and film processing, masking, retouching and taping of films.

The benefits are obvious: The screen is produced easier, faster, cheaper, at higher quality levels and with less production steps.

LED TECHNOLOGY

The new generation of DLE machines contains modern UV light sources. These LED light sources are integrated.

TECHNICAL SPECIFICATIONS

maximum screen size up to 4 x 8 meter
(other sizes on request)

Please contact CST for your exact requirements

power requirements 230 V single phase, 2,5 kVA
compressed air

machine speed up to 60 squaremeter/hour
depending on resolution

exposure system DMD-System with UV bulb
or LED light source

resolution 500 - 2500 dpi

- In line connection to screen developing system (automatic loading and unloading are available)
- Autofocus system to compensate various distances between mesh and headsystem
- Remote access connection for easy service
- Automatic calibration system

This improves the stability and the lifetime of the fully encapsulated light source drastically.

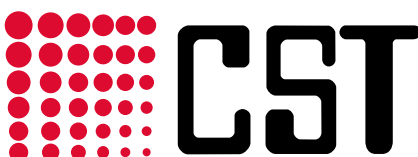
OUR COMPANY

CST GmbH has established an excellent reputation in the fields of colour scanners, film plotters and screen imaging systems, reflected by large market share and worldwide sales to more than 50 countries with more than 850 installations. Using the latest in mechanical and electrical technology, our engineering team develops the reliable and accurate lines of machines optimized for ease

of operation, high productivity and quality. Since 2002 our company is ISO 9001:2000 certificated.

THE CST PRODUCT RANGE AT A GLANCE

- DLE, DLE ROTARY, DLE-COMPACT, DLE-ECO
- Rotary and flatscreen waxjet / InkJet engravers
- Special solutions for engraving and scanning



www.c-s-t.de

CST GmbH · Königsberger Straße 117 · 47809 Krefeld · Germany
Tel +49 2151 159 226 0 · Fax +49 2151 520 329 · email office@c-s-t.de

CST GmbH (R&D) · Kriegerstraße 26a · 82110 Germering · Germany
Tel +49 89 844 873 · Fax +49 89 845 942 · email office@c-s-t.de